

Polara Engineering, Inc.

iNav SNMP Basics

Revision 0.1

Date: 10/08/18

Table of Contents

1.	SNMP	3
2.	iNav SNMP	3
2.1	Alert Messages (SNMP Traps)	3
3.	Getting started with iNav SNMP.	4

1. SNMP

The Simple Network Management Protocol (SNMP)

- It is a popular protocol for network management.
- Used for collecting information from, and configuring, network devices on an Internet Protocol (IP) network.
- Uses third-party SNMP management software to monitor the status of devices that provide an SNMP agent software.
- A single SNMP manager can manage one or many SNMP devices across an IP network.
- Uses a Management Information Base (MIB) to define a set of objects that represent information about the network devices.

2. iNav SNMP

- Each iNav iN2/iCCU intersection contains an SNMP Agent that can be configured communicate with an SNMP Manager.
- Connected to network using Ethernet connection on iCCU-S or iCCU-C.
- Works with any third party SNMP Manager that supports SNMPv1.
- Can be configured to send an alert message (SNMP Trap) to up to 3 SNMP Managers.
- Each iNav SNMP Agent can be configured with unique system name, system location and system contact.

2.1 Alert Messages (SNMP Traps)

When configured for the sending Health Log Trap messages, the iNav SNMP Agent will send a Health Log Trap for the following 6 events:

- User logged on from BLE, Wi-Fi, or Ethernet.
- PBS lost connection to iCCU.
- PBS obtained a connection to iCCU.
- Ped Interval set to Off with phase number.
- Ped Interval Walk/Don't Walk Conflict with phase number.
- iCCU is started initially, after a power cycle or software reset.

More health log events could be added in future with firmware updates.

3. Getting started with iNav SNMP.

- Make sure you have iCCU version 3.85 or higher.
- Connect the iCCU to your IP network using an Ethernet cable.
- Load the Polara iNav MIB file into your SNMP Manager application. The MIB file available for download on Polara web site.
- Using the PC, IOS or Android Application,
 - Configure your iCCU IP address according to your network addressing plan.
 - Configure the SNMP system fields for name, location and contact.
 - Configure the IP address(es) of up to 3 SNMP Managers that will receive the Health Log Traps.
 - Send one or more test traps to verify it is working.

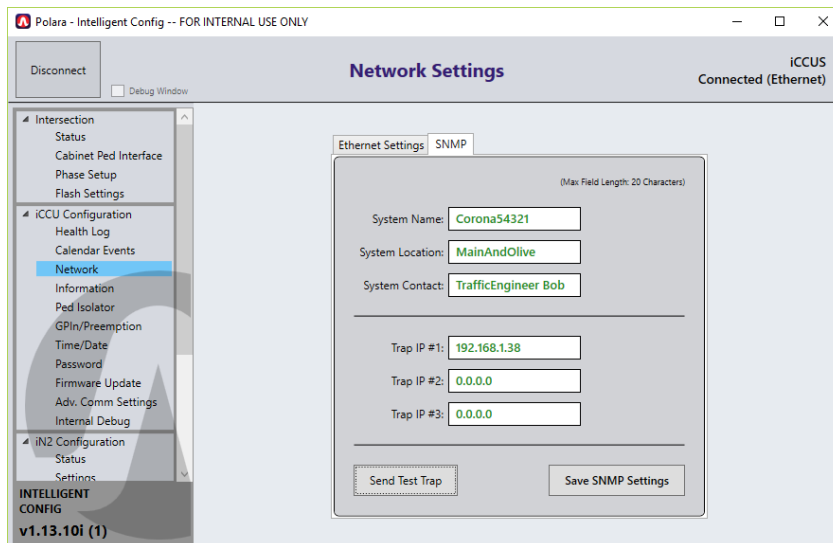


Figure 1 PC Application SNMP Configuration Screen