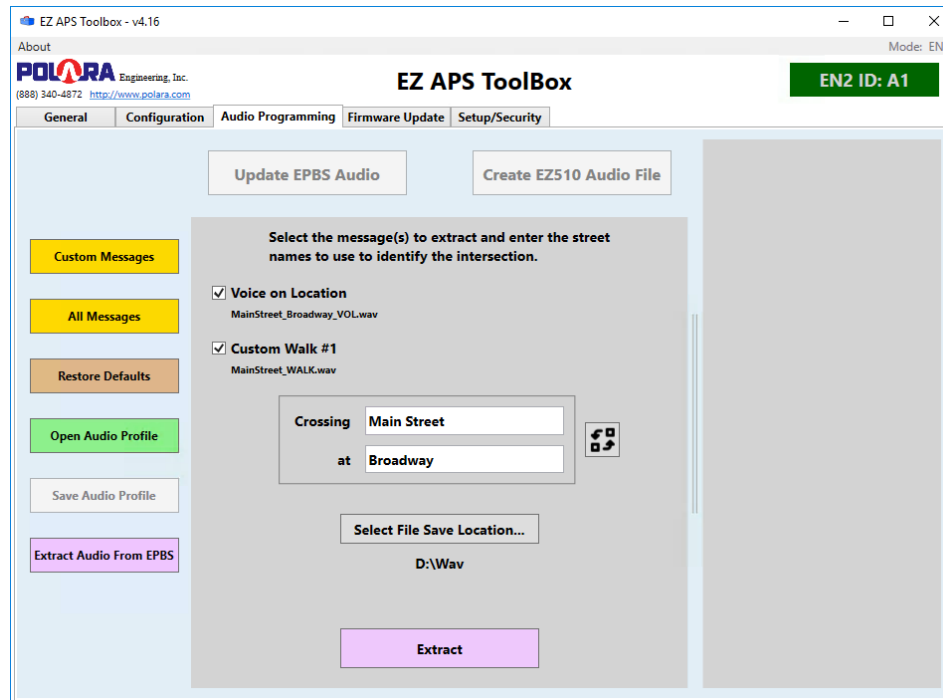


Date: 5/16/17

An update to the EZ APS Toolbox has been released that includes some new features and some minor bug fixes. The new version of the EZ APS Toolbox is v4.16.

- Added the ability to extract the Voice on Location (Custom Information Message) and Custom Walk messages from EPBS units.



Click on the “Extract Audio from EPBS” button, then select the message(s) to extract, then enter in the street names for the intersection. The wave file(s) will automatically be named and stored on your computer. Then they will be ready to be written to another unit in case of a knockdown.

- Added ability to open configuration files from any format or version of the Toolbox. Can now open SP1 Toolbox files in SP2 (.en2c vs .e2c). Can now load an EN4 config for use in an EN2 and vice-versa.
- Fixed issue with SP0->SP1 upgrade when SP0 version was v1.xx.
- Fixed issue which caused Extended Push Priority configuration parameter to not read correctly from the PBS.
- Allow only one instance of Toolbox to be open at once.
- Put the version number in the window titlebar.
- Added ‘Start Programming’ button to the Firmware Update screen in addition to the EZ510 image Power/Program button.

**The new EZ APS Toolbox v4.16 is available on Polara’s website.**

Polara Engineering, Inc., 9153 Stellar Court, Corona, CA 92883  
(714) 521-0900, <http://www.polara.com>