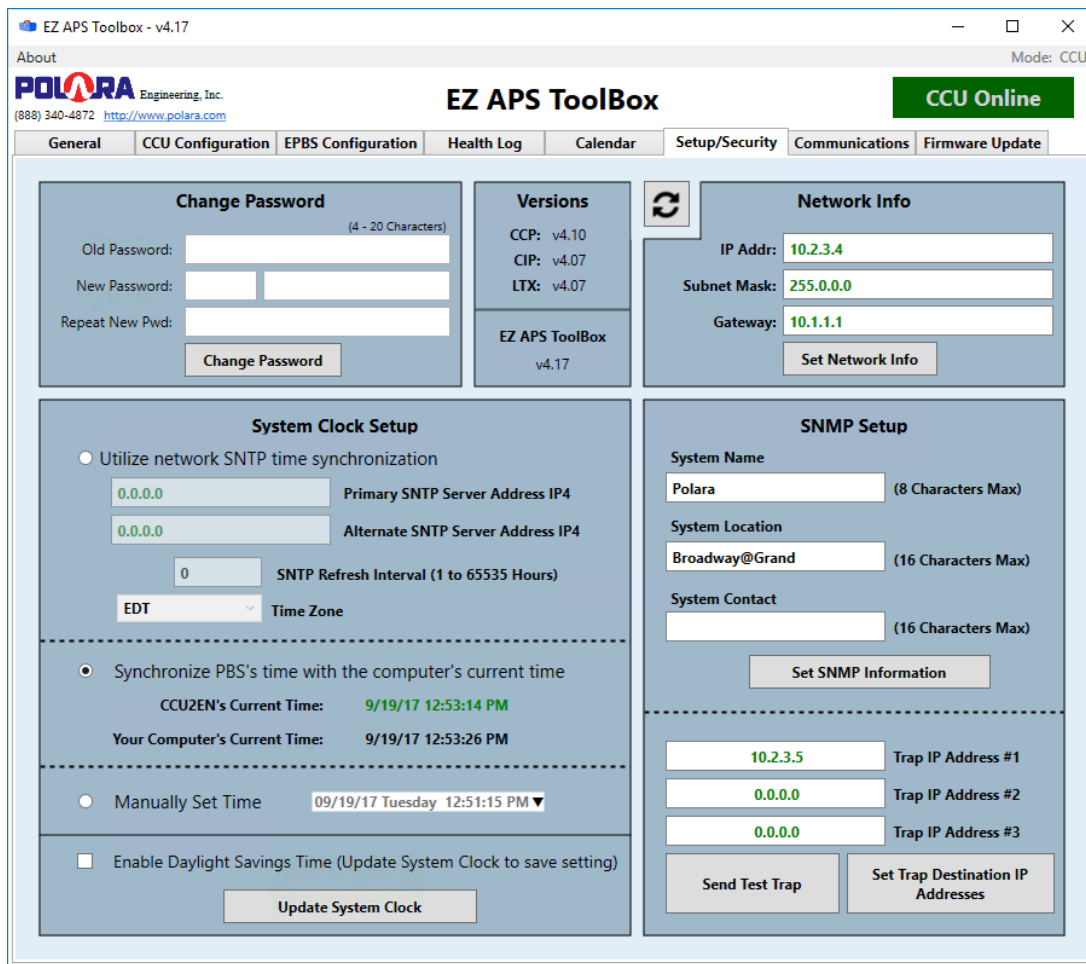


Date: 9/19/17

An update to the CCU2EN Ethernet LTX Firmware has been completed and an update to the EZ APS Toolbox has been released. The new version of the EZ APS Toolbox is v4.17. and the CCU2EN Ethernet LTX firmware is v4.7.

- Due to a hardware change in the Ethernet module, the updated firmware is needed to enable the unit to have a valid Ethernet MAC Address. This update is highly recommended if Ethernet will be utilized.
- Added the ability to read and update the IP Address and network information for the Ethernet module using the EZ APS Toolbox. The IP Address, Subnet Mask, and Gateway can now be changed on the CCU2EN via Ethernet or USB.



The new EZ APS Toolbox v4.17 and CCU2EN Ethernet Update v4.7 are both available on Polara’s website.

Polara Engineering, Inc., 9153 Stellar Court, Corona, CA 92883
 (714) 521-0900, <http://www.polara.com>